

45Watt
DIN-Rail
Power
Module

DIN-Rail Power Module

45 Watt DR-Hutschiene-Serie



DIN-RAIL POWER

Besondere Merkmale Features

Universaleingang	Universal input
Hoher Wirkungsgrad	High efficiency
Sehr kompakter Aufbau	Ultra compact design
Überlast- und kurzschlußfest	Overload short circuit protection
Interner Eingangsfilter	Internal input filter
Montage ohne Werkzeug	No tools required for mounting

Anwendung Application

Schaltschrank mit Hutschiene	switch cabinet with DIN-RAIL
------------------------------	------------------------------

Technische Daten Specification

bei 25°C Umgebungstemperatur	at 25 °C ambient temperature
------------------------------	------------------------------

Eingangsdaten Input Specifications

Eingangsspannung	Input voltage	90...264 V AC or 120...372 VDC
Eingangsfrequenz	Input frequency	47...63 Hz
Wirkungsgrad	Efficiency	typ. 72%
Einschaltstromstoß	Inrush current	<30A@115VAC, <60A@230VAC

Ausgangsdaten Output Specifications

Leistung	Power	25-48 Watt
Spannungs-Regelabweichung	Line regulation	±1% @Vo nom
Last-Regelabweichung	Load regulation	±1% @ Vo nom
Überstrom/Kurzschlußschutz	Overcurrent/short-circuit protection	>105-150%, Auto Restart
Restwelligkeit	Ripple and noise	see table
Temperaturschutz	Overtemperature	Tj 135° typ. on heatsink, Autorecover after temperature goes down
Betriebsanzeige	Power on indicator	LED

Allgemeine Daten General Specifications

Betriebstemperatur	Operating temperature	-10°C...+50°C, Derating see table
Lagertemperatur	Storage temperature	-25°C...+85°C
Luftfeuchtigkeit	Humidity	max 95 %RH
Isolationswiderstand	Isolation resistance	100 MOhm min.
Isolation	Dielectric withstand (Hipot)	Input <-> Output 3 KVAC
MTBF	MTBF	MIL-HNBK: 364.000 h
Gehäusematerial	Case material	Sealed plastic with fine ventilation grid
Kühlung	Cooling	Convection
Leckstrom	Leakage current	<1mA/240VAC
DIN-Hutschiene	DIN-RAIL	TS35/7.5 or TS35/15
Funkentstörung	EMI	EN 55022 B, EN55011
Störfestigkeit	EMS	EN61000-4-2,3,4,5,8,11EN,61000-3-2,3
Zulassungsbestimmungen	Safety approvals	ENV50204, EN55024, EN61000-6-2 criteria A UL /cUL 508, TÜV EN 60950

DIN-Rail Power Module

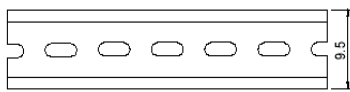
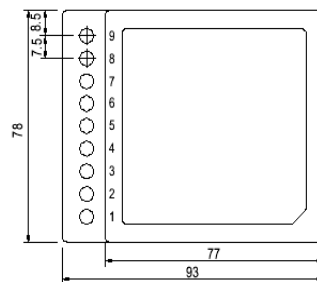
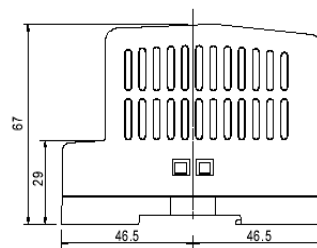
45 Watt DR-Hutschiene-Serie

45 Watt DIN-Rail Power Module

Bestell-Information / Order Information

Modell	Ausgang 1 Output 1	Last/Load		Ripple & Noise. typ.	Adjustable output voltage by potentiometer
		Min.	Max.		
DR-45-05	5 V	0.0 A	5,0 A	100mVpp	4,75...5,5 V
DR-45-12	12 V	0.0 A	3,5 A	200mVpp	10,8...13,2 V
DR-45-15	15 V	0.0 A	2,8 A	240mVpp	13,5...16,5 V
DR-45-24	24 V	0.0 A	2,0 A	480mVpp	21,6...26,4 V

MEMO:

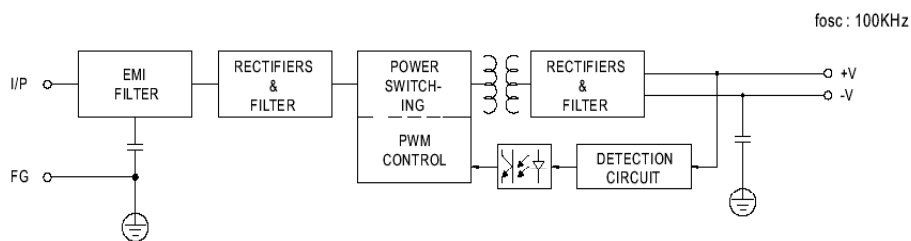


Install DIN rail TS35/7.5 or TS35/15

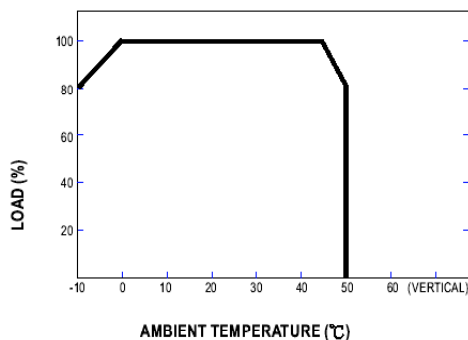
Terminal Pin. No Assignment

Pin No.	Assignment	Pin No.	Assignment
1	AC/L	6,7	DC OUTPUT+V
2	AC/N	8	LED
3	FG ⊕	9	+VADJ.
4,5	DC OUTPUT -V		

Block Diagram



Output Derating



Static Characteristics (24V)

