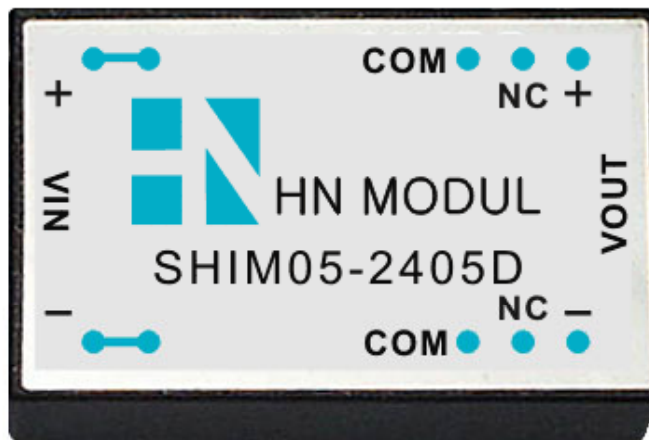


5 W  
DC/DC  
SHIM  
MODUL

# SHIM05 DC Power Package

5 Watt Ultra-Wide-Input DIL24 Compact-Serie



## Besondere Merkmale Features

Weiter Eingang 4:1	Wide input range 4:1
Geringe Bauhöhe	Low profile
Isolationspg. min. 1600V DC	Isolation min. 1600V DC
Hoher Wirkungsgrad	High efficiency
Kurzschlußfest	Short circuit protection
Überlastschutz (120%, auto recover)	Overload protection(120%,auto-recover)

## Anwendung Application

Telekommunikation	Telecommunication
Rechnersysteme	Computer applications
MSR	Control equipments
Mikroprozessorsysteme	Microprocessor systems

## Technische Daten Specification

(bei 25°C Umgebungstemperatur) (at 25°C ambient temperature)

## Eingangsdaten Input Specifications

Eingangsspannung	Input voltages	9...36, 18...75 VDC
Eingangsfiler (integriert)	Build in filter	PI-Type

## Ausgangsdaten Output Specifications

Leistung	Power	4-6 Watt
Wirkungsgrad	Efficiency	typ. 80%
Schaltfrequenz	Switching frequency	300 kHz
Regelabweichung	Voltage accuracy	typ. $\pm 2\%$
Lastregelung	Load regulation	$\pm 1\%$
Eingangsregelung	Line regulation	$\pm 0,5\%$
Restwelligkeit	Ripple and noise	<0,2% +20mV max. (Vp-p)

## Allgemeine Daten General Specifications

Betriebstemperatur	Operating temp.	-25°C...+71°C, derating see table
Lagertemperatur	Storage temperature	-55°C...+105°C
Temperaturkoeffizient	Temp. coefficient	0.02% / °C
Kurzschlußfest	Short circuit protection	Current limit, auto recovery
Gehäusematerial	Case material	Six-side shielded Aluminium
MTBF	MTBF	>800.000 h@25°C (MIL-HDBK-217F)
Maße/Gewicht	Dimension/Weight	31.8x20.3x12.2mm / 13 Gramm

# SHIM05 DC Power Package

## 5 Watt Ultra-Wide-Input DIL24 Compact-Serie

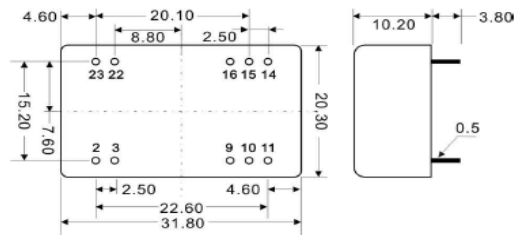
**5 W  
DC/DC  
SHIM  
MODUL**

### Bestell-Information / Order Information

Modell	Eingang Input VDC	Ausgang1 Output 1 V/mA	Ausgang 2 Output 2 V/mA	Gehäuse Case
SHIM05-2403S	9-36	3,3/1200		DIL24
SHIM05-2405S	9-36	05/1000		DIL24
SHIM05-2412S	9-36	12/500		DIL24
SHIM05-2415S	9-36	15/400		DIL24
SHIM05-2424S	9-36	24/250		DIL24
SHIM05-4803S	18-75	3,3/1200		DIL24
SHIM05-4805S	18-75	05/1000		DIL24
SHIM05-4812S	18-75	12/500		DIL24
SHIM05-4815S	18-75	15/400		DIL24
SHIM05-4824S	18-75	24/250		DIL24
SHIM05-2405D	9-36	+ 5/500	- 5/500	DIL24
SHIM05-2412D	9-36	+12/250	-12/250	DIL24
SHIM05-2415D	9-36	+15/200	-15/200	DIL24
SHIM05-4805D	18-75	+ 5/500	- 5/500	DIL24
SHIM05-4812D	18-75	+12/250	-12/250	DIL24
SHIM05-4815D	18-75	+15/200	-12/200	DIL24

Andere Typen und Spannungen auf Anfrage • Other models and configurations on request.

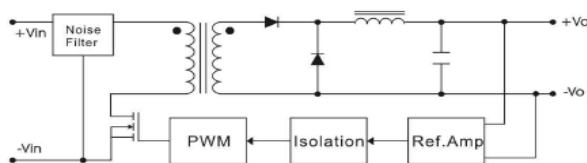
### PIN-Belegung und Zeichnung / Pin Assignments & Drawing, mm (inch)



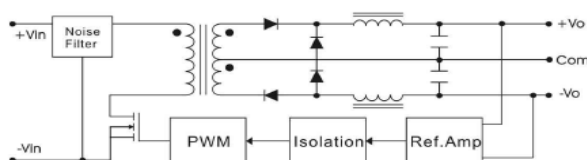
PIN#	Single	Dual
2	-VIN	-VIN
3	-VIN	-VIN
9	NC	COMMON
10	NC	NC
11	NC	-VOUT
14	+VOUT	+VOUT
15	NC	NC
16	-VOUT	COMMON
22	+VIN	+VIN
23	+VIN	+VIN

### BLOCK DIAGRAM

#### Single Output



#### Dual Output



### DERATING

